



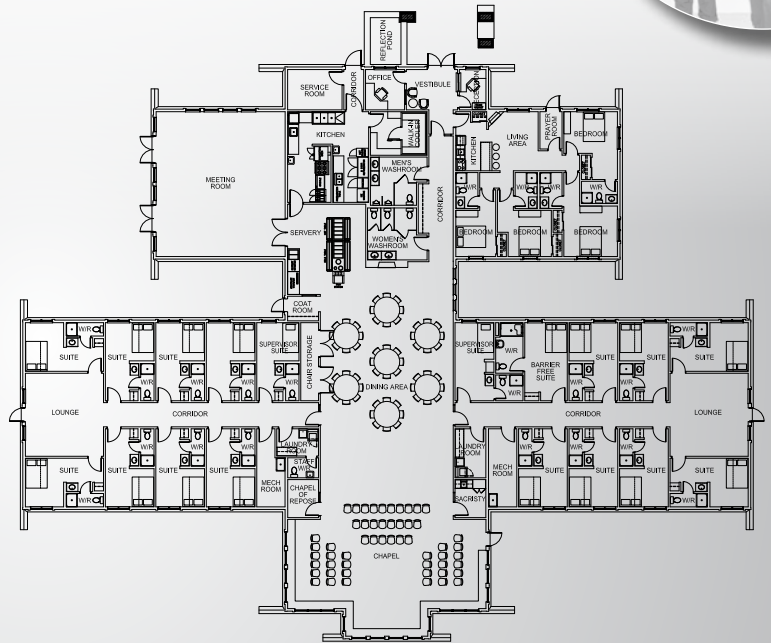
Jericho's New Home



Raimondo & Associates Architects Inc.



Inspired by Frank Lloyd Wright's Prairie Style design, Jericho House is an air conditioned, wheelchair accessible, single story, 14,000 square feet centre providing: meeting space, chapel, dining room, games room, and multiple occupancy bedrooms (accommodating from 1 -3 persons per room). The combination of design, function and site brings to life Wright's insight that, "Buildings, too, are children of earth and sun." Jericho House's idyllic setting, nestled beside its 14 acre Carolinian Forest, is the ideal accommodation for numerous events, including: retreats, conferences, workshops, seminars, luncheons, and numerous other special occasions.



Jericho House is an ecumenical and inter-faith youth leadership, justice (social and ecological) and spirituality center rooted in the Catholic tradition. It provides programmes and experiences in a respectful, supportive and inclusive environment. Jericho House also provides **hospitality to individuals and groups who wish to facilitate their own programmes.**

Situated 80 meters from the Trans Canada Trail and a mere 800 meters from Lake Erie on Rathfon Road in Wainfleet, Jericho's 17 acre site abuts the Niagara Peninsula Conservation Authority's 450 acre Wainfleet Wetlands. This unique setting offers not only peaceful solitude for events, but also, numerous opportunities for outdoor recreation, including: walking, hiking, snowshoeing, cycling, swimming, bird watching, horseback riding and cross country skiing.